



Horkesley Way , Wickford, SS12 9AW Guide Price £340,000

** GUIDE PRICE £340,000 - £360,000 ** Cowling & Payne are delighted to market this 2 bedroom, semi-detached house nestled in a sought-after area on the Wick Meadows Estate.

With two well-proportioned bedrooms, this property offers a comfortable living space that is both inviting and practical.

Upon entering, you will find a spacious reception room that is perfect for relaxing. The property also boasts a delightful conservatory extension at the rear, which floods the space with natural light and provides a dining area which connects seamlessly to the kitchen.

The bathroom is well-appointed, ensuring that all your needs are met in this lovely home. The outdoor space is equally inviting, providing a private garden area that is perfect for enjoying the fresh air or hosting summer gatherings.

The property also features off street parking & a garage which is attached at the side of the property. This offers a convenient place for storage, with access at both the front and rear.

The location is particularly appealing, being in close proximity to Wickford High Street, where you can find a variety of shops, cafes, and essential amenities. This vibrant community offers a blend of

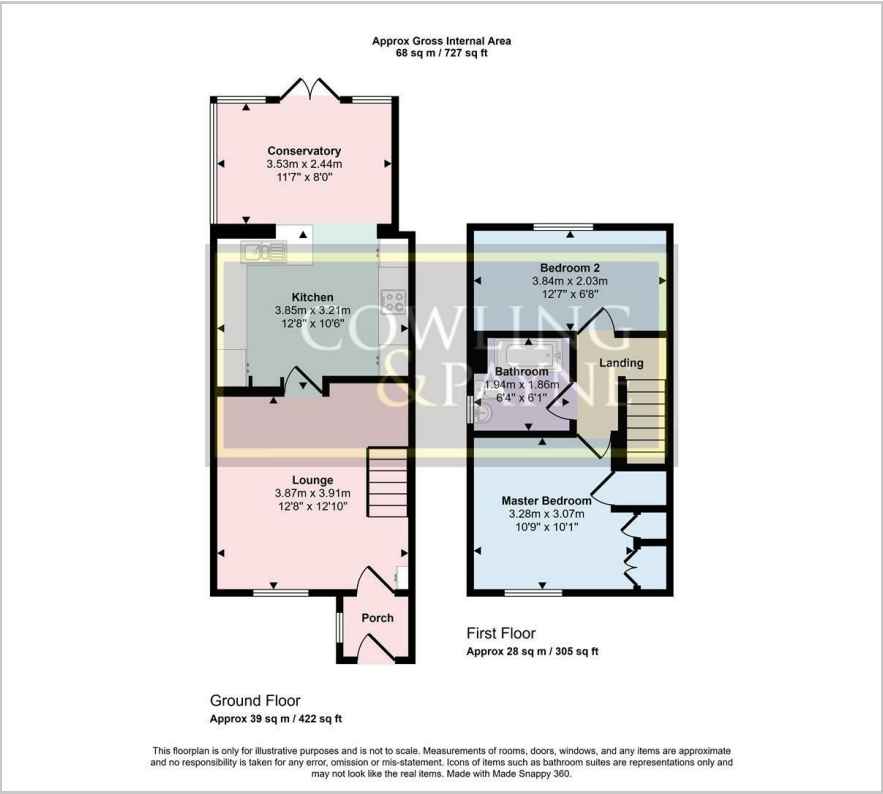
- GUIDE PRICE £340,000 - £360,000
- TWO BEDROOMS
- GARAGE & OFF STREET PARKING
- CONSERVATORY LEADING ON FROM KITCHEN
- POPULAR LOCATION ON THE WICK MEADOWS ESTATE
- NEARBY TO WICKFORD HIGH STREET
- NEARBY TO WICKFORD RAILWAY STATION
- IDEAL FIRST TIME PURCHASE
- COUNCIL TAX BAND - C - BASILDON
- EPC - C

Viewing

Please contact our Sales Office on 01268 730707 if you wish to arrange a viewing appointment for this property or require further information.



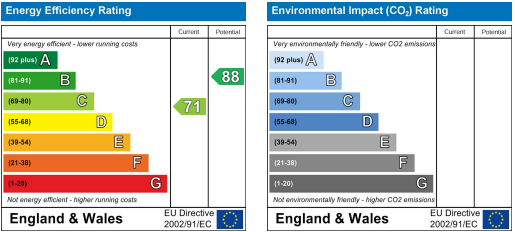
Floor Plan



Area Map



Energy Efficiency Graph



These particulars, whilst believed to be accurate are set out as a general outline only for guidance and do not constitute any part of an offer or contract. Intending purchasers should not rely on them as statements of representation of fact, but must satisfy themselves by inspection or otherwise as to their accuracy. No person in this firm's employment has the authority to make or give any representation or warranty in respect of the property.